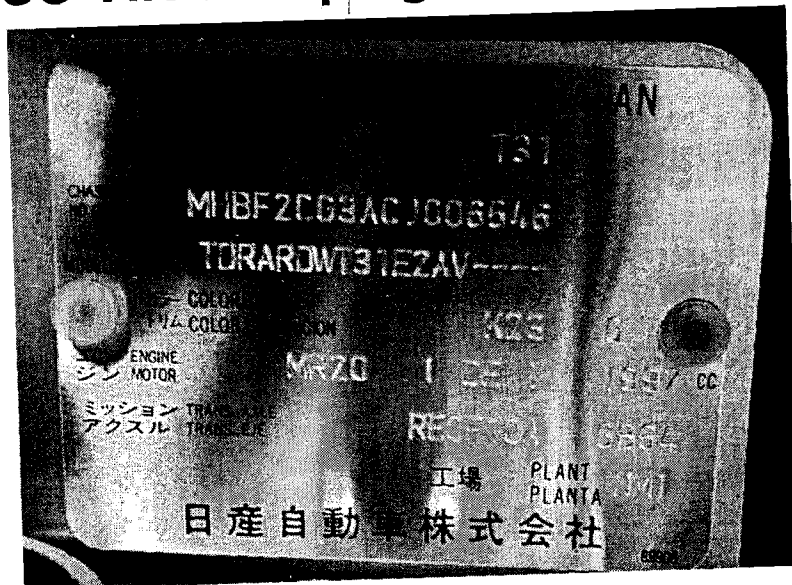


(ISO) VIN Stamping

- P32E MC ISO Chassis #



- ISO VIN stamping Plate Model



For qm Tom
www.
DLI. do TH / inspection
done 92

(Handwritten signature)
2019

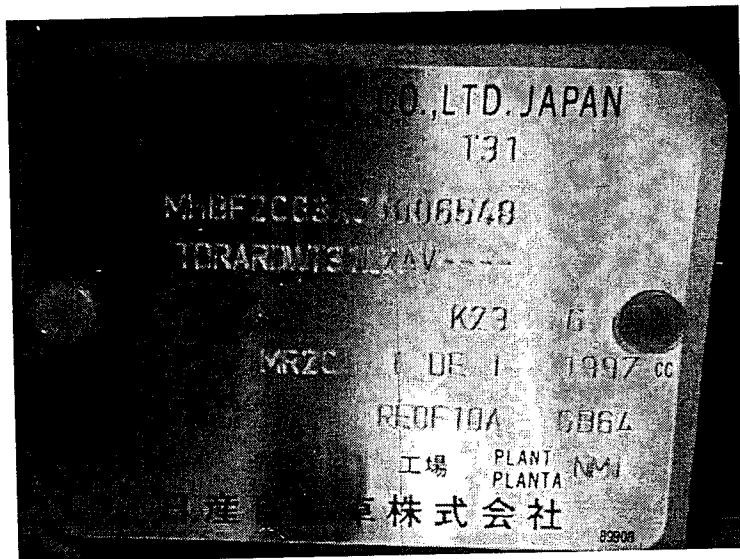
NISSAN
บริษัท นิสสัน มอเตอร์ (ประเทศไทย) จำกัด
NISSAN MOTOR (THAILAND) CO., LTD.

(ISO) VIN Stamping

- P32E MC ISO Chassis #



- ISO VIN stamping Plate Model



VIN Number Format for P32E MC-THI model

Model	Engine	Transmission	Grade	Vehicle Identification Number (VIN)								Applied No.		
P32E (T31)	2000 cc	CVT 2WD	Mid	M	H	B	F2	C	G3	A	B	J	00000X	85

M = Asia
H = Indonesia
B = PT. Nissan Motor Indonesia
F2 = X-TRAIL (T31) model
C = Passenger Car 5 door
G3 = KH2 (2.0) Engine
A = Automatic 2WD transmission
B = 2011 production year
J = West Java Province
00000X = Production No.

NMT-THI CONFIRMATION		
CHECKED	APPROVED	
<i>R. Wilasinee</i>	<i>T. Miyashita</i>	
Name :	MS. WILASINEE RODNIM	MR. TOMOYA MIYASHITA
Position:	Assistant Manager	Manager
	Environment & Safety Engineering Section NISSAN TECHNICAL CENTER SOUTH EAST ASIA	
Date:	19-Jul-2011	19-Jul-2011


NISSAN
 บริษัท นิสสัน มอเตอร์ (ประเทศไทย) จำกัด
 NISSAN MOTOR (THAILAND) CO. LTD.